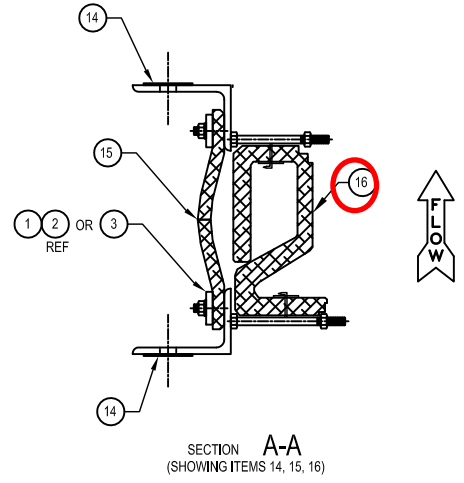
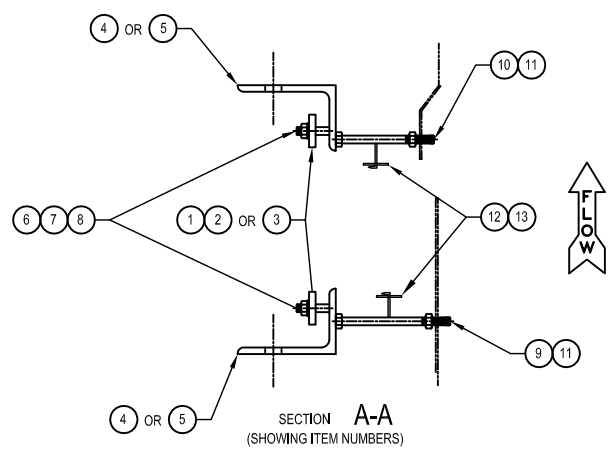


ITEM No.	SUB QTY	TOTAL QTY	DWG. No.	ITEM DESCRIPTION	TYPE	DESIGNATION	MATERIAL LIST DESCRIPTION
1		24	146989	INNER CLAMPING BAR	A36	10mm PL	50 x 1219, SEE DETAIL
2		16	146989	OUTER CLAMPING BAR	A36	10mm PL	50 x 1176, SEE DETAIL
3		8	146989	CORNER CLAMPING BAR	A36	10mm PL	50 x 289, SEE DETAIL
4		8	146989	FRAME CORNER ASSEMBLY	-	-	ASSEMBLY
4 1	1	8	146989	PLATE	A36	10mm PL	300 x 300, SEE DETAIL
4 2	1	8	146989	PLATE	A36	10mm PL	90 x 244, SEE DETAIL
5		16	-	ANGLE	A36	-	160 x 100 x 10 x 3005 LONG
6		336	-	BELT STUD	A36	M12 x 1.75	50 LONG
7		336	-	BELT NUT	A36	M12 X 1.75	STANDARD
8		336	-	BELT WASHER	A36	M12	NOMINAL, FLAT
9		64	140287	INLET INSULATION BOLT (STUD)	304 SS	ANNEALED	M12 170 LONG FOR 150 INSULATION
10		64	-	OUTLET INSULATION BOLT (STUD)	304 SS	ANNEALED	M12 150 LONG
11		128	-	HEX NUT	304 SS	M12	STANDARD
12		1084889	-	INSULATION PIN	304 SS	-	10 GA X 2" [51] PINS
13		128	1084888	INSULATION RETAINER CLIP	304 SS	-	10 GA X 1 1/2" [38] OD CLIPS
14		2	-	LADDER GASKET	FIBERGLASS	3 [1/8]	75mm [3"] WD x 26 METERS [85 ft] LONG
15		2	160944	FJ1250GT BELT	COMPOSITE	-	-
16		2	160945	GT-DOME SEAL	CERAMIC	-	-
17		48	-	WASHER, FENDER	SS	3mm THK	37 OD x 13 ID

- NOTES:
- ALL METAL EDGES IN CONTACT W/ FLEXIBLE ELEMENT TO BE ROUNDED OR GROUND SMOOTH.
 - CLAMP BARS NOT TO EXCEED 5' IN LENGTH.
 - FRAMES & CLAMPS TO BE FINISHED PER GENERAL ARRANGEMENT DRAWING.
 - FRAMES TO BE PRESET TO SECT. A-A, FACE TO FACE DIM.
 - PRESET BARS TO BE PAINTED "YELLOW" & AFFIXED WITH "REMOVE AFTER INSTALLATION" STICKERS.
 - FLOW ARROW TO BE MARKED ON INLET LINER TO SHOW FLOW DIRECTION.
 - CAVITY INSULATION, DOME SEAL & BELTS TO BE FACTORY INSTALLED.
 - FRAMES TO BE SHIPPED IN (2) U-SHAPED SECTIONS TO BE FIELD WELDED & ERECTED BY OTHERS.
 - OUTLET LINER NUTS TO BE TACK WELDED AFTER BRIDGE PLATE INSTALLATION BY OTHERS.
 - DO NOT INSULATE OVER FLEXIBLE ELEMENT.
 - TORQUE BELT FASTENERS TO 25-35 FT #
 - CHECK FASTENERS AFTER (3) MONTHS SERVICE.
 - THEN BI-ANNUALLY (MAINTAIN MINIMUM OF 20 FT. #)
 - EXTRA BELT AND INSULATION MATERIAL FOR FIELD SPlicing TO BE TUCKED INSIDE FRAME AND PROPERLY PROTECTED FOR SHIPPING.

FOR INFORMATION




DESIGN DATA	
DESIGN TEMP.	570° C
DESIGN PRESS.	+100 +200 mm
AXIAL MVT.	+35 / -40 mm
LAT. MVT.	±25
APROX. WT.	1440 Kg.

ZONE/UTM	DESCRIPTION	REVISIONS	DATE	CHK.	APP.	DATE
1	ISSUE FOR INFORMATION	MDK	01APR10			

TITLE	DRAWN BY	DATE
6000 x 6000 x 411 GTJ-CC BYPASS EXPANSION JOINT (1/2)	DSL	01APR10
	MDK	02APR10


CONTRACTOR JOB NO.	SCALE	APPROVED BY	DATE
SO-224100		MDK	02APR10


DRAWING NO.	SIZE	REV.
252008-VN-EM-DID-0003-0008	A0	A



CLYDE BERGEMANN BACHMANN
 ENGINEERS ARCHITECTS CONSULTANTS
 PHILADELPHIA, PA., U.S.A.


REV.	DATE	DESCRIPTION	DRN.	CHK.	RW.	APP.
01APR10		ISSUED FOR INFORMATION	DSL	MDK	MDK	

PROJECT NAME:
**SAMRA POWER STATION PHASE III
 SIMPLE CYCLE PROJECT**


Samra Electric Power Generating CO. (SEPGCO)


THE KULJIAN CORPORATION
 ENGINEERS ARCHITECTS CONSULTANTS
 PHILADELPHIA, PA., U.S.A.


Hanwha Engineering&Construction


CLYDE BERGEMANN BACHMANN

