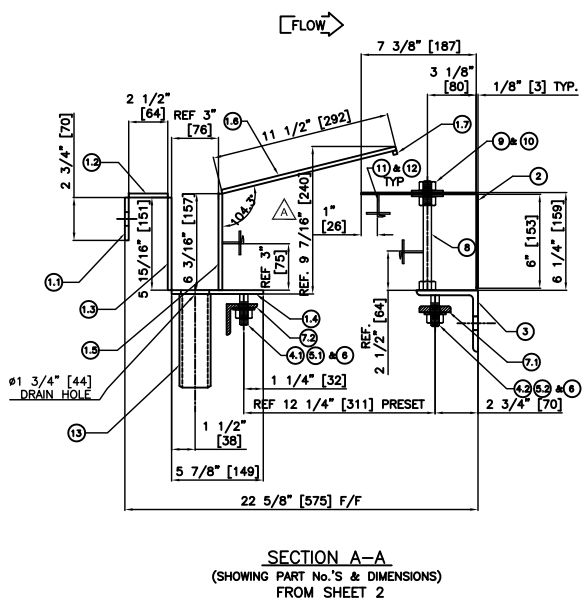
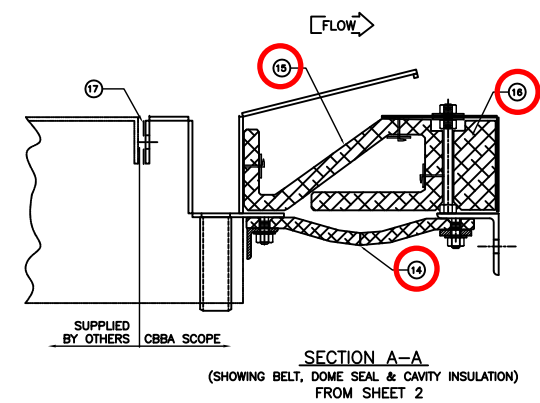
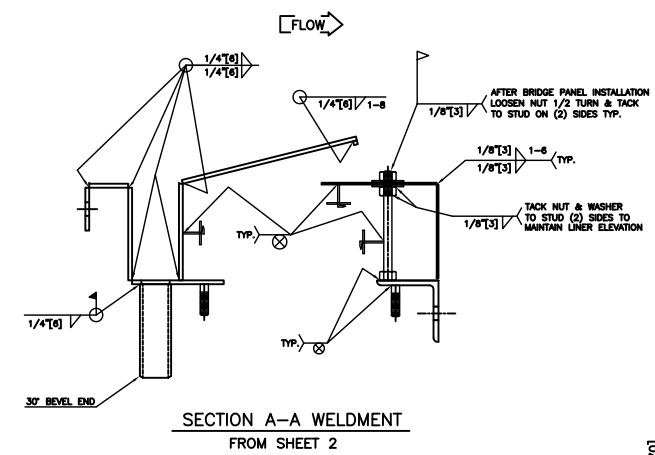


ITEM NO.	TOTAL QTY	DWG. No.	ITEM DESCRIPTION	TYPE	DESIGNATION	MATERIAL LIST DESCRIPTION
1	1	-	E.J. FRAME ASSEMBLY	-	-	-
1	1	-	INLET FLANGE RING	A387 GR11	6 (14) PLT	5471 (215 3/8) I.D. X 5610 (220 7/8) O.D.
1	2	-	INLET FRAME SPOOL	A387 GR11	6 (14) PLT	5458 (214 7/8) I.D. X 5471 (215 3/8) O.D.
1	3	-	INLET FRAME RING	100 x 100 x 8	6 (14) PLT	5471 (215 3/8) I.D. X 5772 (227 1/4) O.D.
1	4	-	INLET FRAME BELT SPOOL	A387 GR11	6 (14) PLT	5772 (227 1/4) I.D. X 5786 (227 3/4) O.D.
1	5	-	INLET LINER RING	A387 GR11	6 (14) PLT	5458 (214 7/8) I.D. X 5772 (227 1/4) O.D.
1	6	-	INLET LINER CONE	A387 GR11	6 (14) PLT	5445 (214 3/8) INLET I.D. - 5304 (208 13/16) OUTLET I.D.
1	7	-	DRIP LIP	A387 GR11	6 (14) PLT	5317 (209 5/16) I.D. X 5329 (209 13/16) O.D.
2	17	155211	OUTLET LINER ASSEMBLY	-	-	-
3	1	-	OUTLET ANGLE FLANGE	A36	100 X 100 X 8	5873 (235 3/16) O.D.
4	1	120	INLET BELT STUD	304 SS	M12	51mm (2") LONG
4	2	120	OUTLET BELT STUD	A36	M12	51mm (2") LONG
5	1	120	INLET BELT HEX NUT	304 SS	M12	-
5	2	120	OUTLET BELT HEX NUT	A36	M12	-
6	1	240	FLAT WASHER	A36	M12	-
7	1	12	BELT CLAMP BAR	A36	101 X 38 PLT	51mm (2") WIDE X 1524mm (60") LONG
7	2	12	BELT CLAMP BAR	A36	50 x 50 x 6	1524mm (60") LONG
8	68	-	ANNEALED OUTLET BOLT (STUD)	304 SS	M12	170mm (6 11/16") LONG
9	136	-	OUTLET LINER HEX NUT	304 SS	M12	-
10	136	-	OUTLET FENDER WASHER	409 SS	M12	17" (13) O. X 2" (51) W. WASHERS
11	240	-	INS. PINS	304 SS	-	10 GA X 2" (51) PINS
12	240	-	INSULATION RETAINER CLIP	304 SS	-	10 GA X 1 1/2" (38) CLIPS
13	1	-	DRAIN PIPE	316 SS	-	51 (2) X 152 LONG
14	1	155244	FLEXIBLE ELEMENT	COMPOSITE	SCH40	-
15	1	155243	DOME SEAL PILLOW	CERAMIC	-	F-125001 BELT
16	1	155243	CAVITY INSULATION	CERAMIC	-	-
17	58	-	METERS OF LADDER GASKET	FIBERGLASS	-	3 (1/8) X 76 (3)

NOTES

- NOTES:
- ALL METAL EDGES IN CONTACT W/ FLEXIBLE ELEMENT TO BE ROUNDED OR GROUND SMOOTH.
 - CLAMP BARS NOT TO EXCEED 5' (1524mm) IN LENGTH.
 - FRAMES & CLAMPS TO BE FINISHED PER GENERAL ARRANGEMENT DRAWING (252008-VM-EM-DAL-0003-0001)
 - FRAMES TO BE PRESET TO SECT. A-A, FACE TO FACE DIM.
 - PRESET BARS TO BE PAINTED "YELLOW" & AFFIXED WITH "REMOVE AFTER INSTALLATION" STICKERS.
 - FLOW ARROW TO BE MARKED ON INLET LINER TO SHOW FLOW DIRECTION.
 - CAVITY INSULATION, DOME SEAL & BELTS TO BE FACTORY INSTALLED.
 - INLET & OUTLET LINER NUTS TO BE TACK WELDED AFTER BRIDGE PLATE INSTALLATION BY OTHERS.
 - DO NOT INSULATE OVER FLEXIBLE ELEMENT.
 - TORQUE BELT FASTENERS TO 25-35 FT. LB (34-47 Nm)
 - CHECK FASTENERS AFTER 3 MONTHS SERVICE, THEN BI-ANNUALLY MAINTAIN MINIMUM OF 20 FT. # (27 Nm)
 - SPACE INSULATION PINS 9" APART CIRCUMFERENTIALLY (EXCEPT THOSE WELDED TO PINS)



DESIGN DATA	
DESIGN TEMP	976° C
DESIGN PRESS.	-10 +62 mbar
AXIAL MVT.	120mm COMP.
LAT. MVT.	±25mm
APROX. WT.	1025 Kg.

FOR INFORMATION

REV.	DATE	DESCRIPTION	DRN.	CHK.	REL.	APP.

PROJECT NAME
**SAMRA POWER STATION PHASE III
SIMPLE CYCLE PROJECT**

Samra Electric Power Generating CO. (SEPGCO)

Hanwha Engineering&Construction

CLYDE BERGEMANN BACHMANN

DRW. NO.	DESCRIPTION	BY	DATE	CHK.	DATE	APP.	DATE

REF. BILL OF MATL

CLYDE BERGEMANN BACHMANN

5459 ID X 575 GTJ-HC
INLET EXPANSION JOINT

TITLE	DRW. BY	DATE

CONTRACTOR JOB NO.	SCALE	APPROVED BY	DATE
SO-224100			

DRAWING NO.	SIZE	REV.
252008-VM- - -0003- 002	AO	

